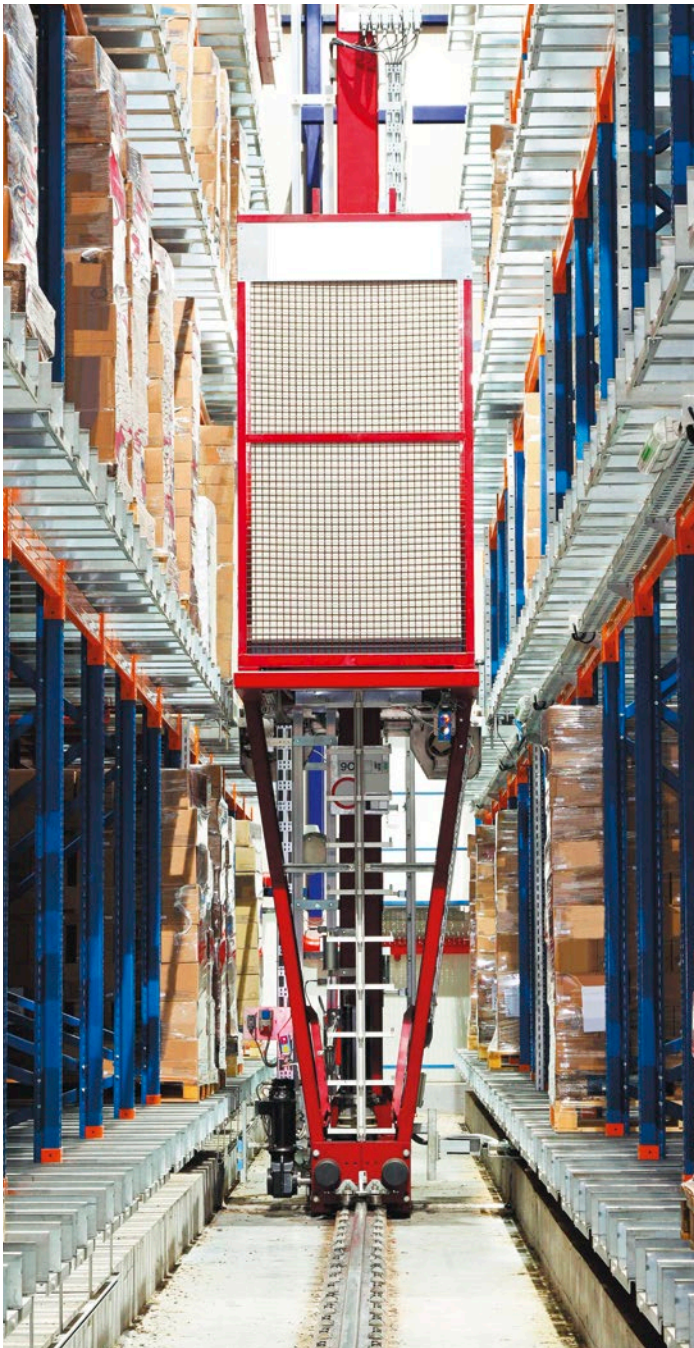


# WMS OPTIpromag

optimization of processes  
warehouse and production



**OPTIpromag** is a complex product (software, devices and service) intended for manufacturing, logistic and trading companies of medium and large size. OPTIpromag system is designed to streamline your supply chain and optimize logistic processes. Thanks to the utilization of modern automatic identification technologies, the system improves, tightens and accelerates key processes such as:

- Receiving of goods/ semi-manufactured goods
- Releasing for production
- Registration of manufacturing events
- Storage (the management of high storage warehouses)
- Assemblage of consignments (including collection of dedicated mixes)
- Realization of dispatches
- Traceability (product tracking and withdrawal from the market)

## Advantages of the system:

**Lead time reduction** for warehouse and manufacturing orders that translates directly into customer service increase and reduction of essential operating costs.

**Reduction of stock** (materials) and **resources** (personnel, forklifts) resulting from the increase in efficiency and precision of operational activities, through e.g. utilization of advanced procedures of stock optimization, management of warehouse surface, restrictive realization of delivery processes.

**Tightening – elimination of theft and misuse**, thanks to tight quantitative and weighing control of current deliveries and releases. Precise settlement of all warehouse and manufacturing operations.

**Individual marking scenarios** enabling the realization of product sets (mixes) and the marking of releases according to individual requirements of key customers e.g. large retail chains.

**Complex delivery** of devices and software by one supplier allows optimization of the system, its cheaper and more efficient servicing and maintenance.

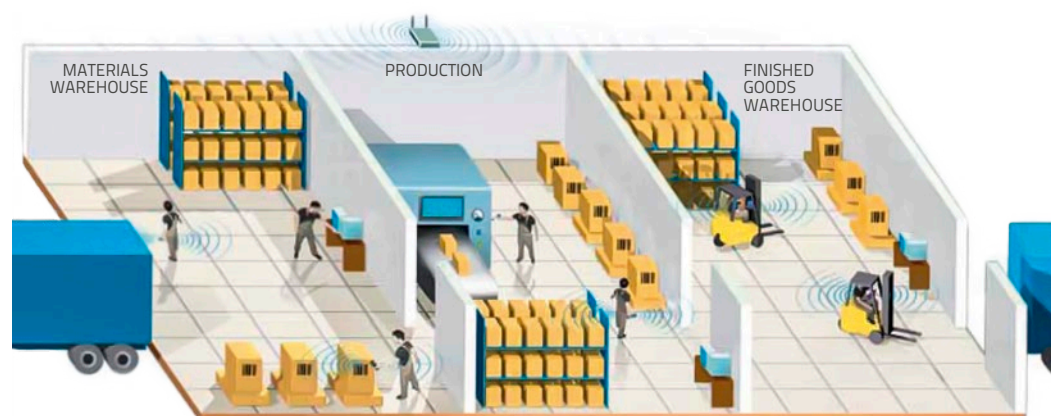
**Modern technologies** are a guarantee of safe investment **Real-time** work On-line is supplemented with advanced procedures of Off-line work in an emergency mode.

## Application range:

|                         |                     |
|-------------------------|---------------------|
| Food Industry           | Chemical Industry   |
| Motor Industry          | Electronic Industry |
| Pharmaceutical Industry | Retail Trade        |
| Distributional centres  | Transport           |

# OPTIDATA

# WMS OPTIpromag



## Receiving goods:

High flexibility of the OPTIpromag system enables the process of the acceptance of goods to be realized according to various scenarios. This allows adapting the realization of reception procedures to various criteria such as: visibility of the accepted position on the order form, prompt delivery, product usability date and many other. Operations are realized by radio which allows for the real time reflection of all warehouse operations in the OPTIpromag system.

## The flow of goods:

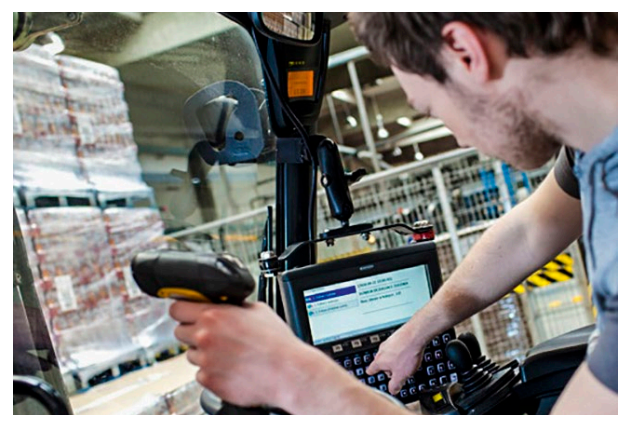
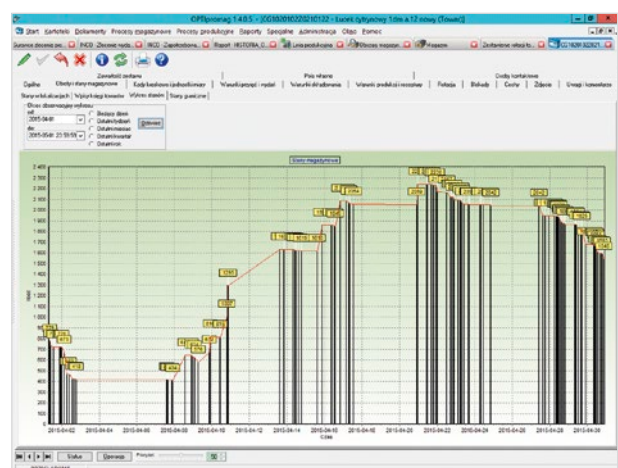
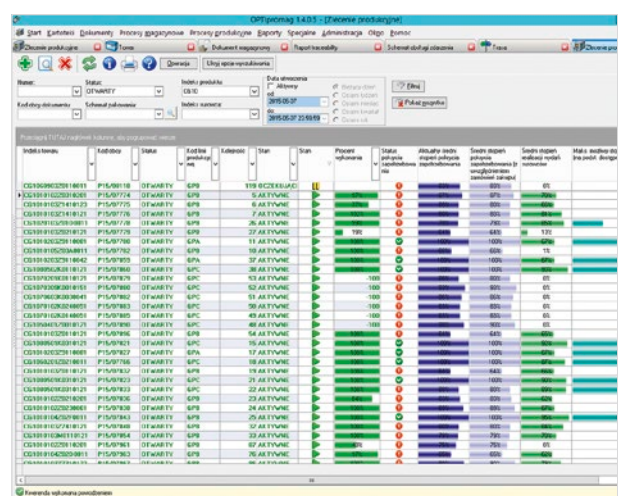
The system realizes individual algorithms of the movement of goods. Goods can be directed to high-rotation warehouse locations (goods with the high rotation factor are located in these areas of the store where further warehouse operations can be quickly executed), to quality inspection, directly to production (Just-In-Time), or can be transferred to the carry out current release order (Cross-Docking). The flow of goods scenarios can be defined in a flexible and dynamic ways for particular goods or their groups according to individual business needs of the user.

## Quality inspection:

OPTIpromag enables the realization of various procedures connected with the provision of the highest quality of the accepted goods. The parameters of the system allow for verification of usability dates, batch numbers, serial numbers and other parameters of goods. The system also serves the procedures of samples receipt and quarantine.

## Locations:

Procedures of the OPTIpromag system accountable for the optimal management of warehouse surface constitute the heart of the system. They can be configured according to various parameters which optimize the management of warehouse surface in a dynamic way. Goods can be ascribed to certain locations (e.g. dangerous materials, goods requiring chilling etc.) and the system enforces this on operators in an absolute way. Other parameters taken into account at the location of goods are their rotation, the structure of receivers, the schedule of releases and other. It is possible to define any warehouse layouts and ascribe individual attributes to these structures.



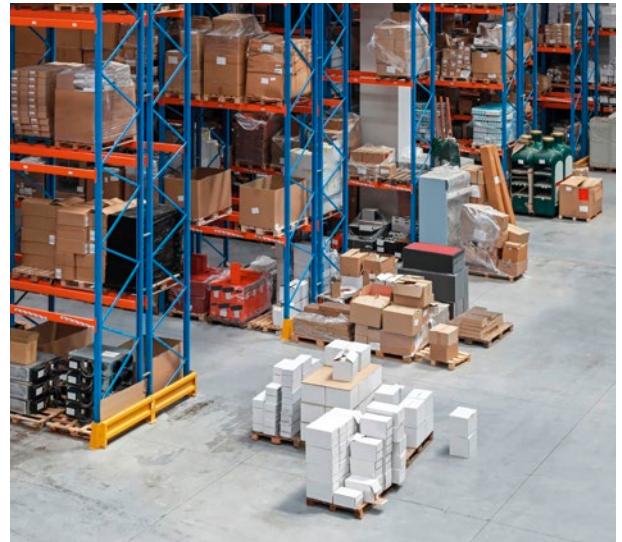


## Kitting:

OPTIpromag system realizes many scenarios of goods assemblage. Goods can be assembled into trade or product sets (mixes). Kitting is realized by means of real-time radio communication and can be realized in one or several stages. The process can be carried out by one or more operators (in a chaotic way according to the rule of free operators order) depending on business requirements and specificity of the line. Additional properties of goods which determine the realization of kitting can be taken into account at this stage (for example goods subject to damage will not be allotted to the base of the stake).

## Production:

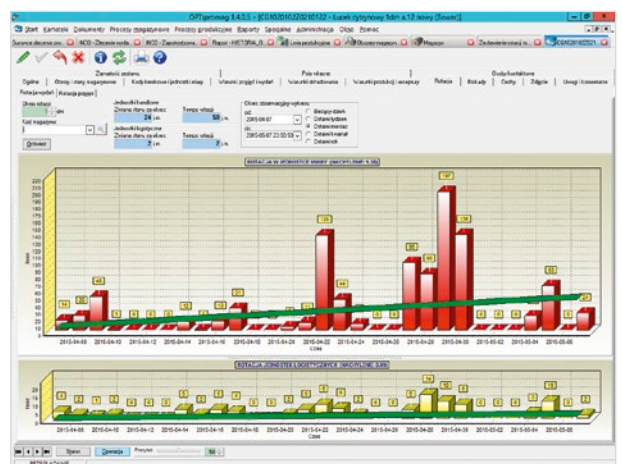
OPTIpromag is a system that allows adaptation to individual needs of manufacturing companies. The system supports users in the area of production completion and production orders, manufacturing events tracking (full traceability of production), monitoring of unusual and dangerous events (e.g. over normative losses of material), marking of production (marking of individual products, multipacks and pallets), quality inspection, production release to warehouses of final goods. The system comprises mechanisms that allow adaptation to stream or concentrated production or production against specific orders. All operations are recorded and chosen processes are evidenced in production proofs. OPTIpromag also realizes full reporting of production including shift reports. The system mechanisms allow conducting inventory (including ongoing production) according to many criteria.



| Artikl   | Opis     | Planirani proizvodnja | Planirani izvoz | Planirani uvoz | Planirani otpad | Planirani ostaci | Planirani gubici | Planirani ostaci | Planirani gubici | Planirani ostaci | Planirani gubici |
|----------|----------|-----------------------|-----------------|----------------|-----------------|------------------|------------------|------------------|------------------|------------------|------------------|
| CS001001 | CS001001 | 24 820                | 24 820          | 0              | 0               | 0                | 0                | 0                | 0                | 0                | 0                |
| CS001002 | CS001002 | 14 879                | 14 879          | 0              | 0               | 0                | 0                | 0                | 0                | 0                | 0                |
| CS001003 | CS001003 | 192                   | 192             | 0              | 0               | 0                | 0                | 0                | 0                | 0                | 0                |
| CS001004 | CS001004 | 200 9                 | 200 9           | 0              | 0               | 0                | 0                | 0                | 0                | 0                | 0                |
| CS001005 | CS001005 | 200 400               | 200 400         | 0              | 0               | 0                | 0                | 0                | 0                | 0                | 0                |
| CS001006 | CS001006 | 170 490               | 170 490         | 0              | 0               | 0                | 0                | 0                | 0                | 0                | 0                |
| CS001007 | CS001007 | 10 770                | 10 770          | 0              | 0               | 0                | 0                | 0                | 0                | 0                | 0                |
| CS001008 | CS001008 | 300 400               | 300 400         | 0              | 0               | 0                | 0                | 0                | 0                | 0                | 0                |
| CS001009 | CS001009 | 30 150                | 30 150          | 0              | 0               | 0                | 0                | 0                | 0                | 0                | 0                |

## Releases:

Assemblage of batches in the OPTIpromag system is a process of high level parameter definition. Batch releases can be correlated with individual marking of logistic objects - according to individual requirements of receivers. The releasing procedure itself can be realized according to various scenarios, to begin from Cross-Docking, through the realization of warehouse orders with the division onto particular operators, to the procedure of releases carried out in many stages and joint with supervisory procedures (e.g. weighing of objects), additional binding or printing of logistic courier firms codes etc. Releasing processes in the OPTIpromag system are optimized to provide top efficiency level - understood as the combination of the utmost capacity with the precision, with the simultaneous elimination of misuse and manipulation.



## Inventories:

The system assures realization of various stock-taking procedures, to begin from the traditional physical inventory, realized by radio terminals working on-line, through random stock-takings according to location of goods or suppliers or the calendar of deliveries, or documents and other parameters. Physical inventory can be realized by many committees simultaneously. It can be also carried out crisscross when one committee inspects the works of another committee independently.



# WMS OPTIpromag

is a perfect solution:

## For the Business:

- Arrangement of logistic processes joint with the optimization of resources (human and equipment)
- Increase of the degree of delivery realizability
- Efficiency increase
- Optimization of routes for warehouse workers
- Batch and serial numbers tracking
- Efficient settlement of complaints
- Quick and accurate inventory
- Restrictive management of usability dates
- Shortening of the cycle time, counted from the moment of placing an order with a supplier to the release to the receiver
- Reduction of stock
- Management of returnable packaging
- Faultless and efficient realization of orders
- Automatic settlement of goods flow in the cycle: warehouse of materials, production, warehouse of final goods
- Analysis of warehouse and production workers performance



## For the Management:

- Productivity increase
- Cost reduction including warehouse and materials costs
- Fast return on investment
- Advanced reporting
- Elimination of misuse and embezzlement
- Efficient implementation backed with a thorough analysis of business needs
- Safe investment



## For IT:

- One supplier, professional service of the equipment and software
- Possibility of integration with business systems of the ERP, MRP and TMS classes
- Data exchange at the level of database transactions, based on XML or other objects according to individual specifications
- Modern technologies based on standard products - the MS SQL database, ORACLE, Windows Operating System or optional WiFi network in the 802.11x standard
- Central management of the radio network and mobile devices
- Integration with dedicated devices such as: object-oriented drivers for production lines, marking printers of the Ink-Jet type, labelers, marking lasers and other
- Scalability and flexibility of the system that allows its adaptation to business requirements of the user
- 24x7 technical assistance within Poland, immediate intervention of servicing units at the customer's location in emergencies
- Various techniques of object identification, to begin from the 1D Bar Code, through the 2D Code to the RFID technology of the radio identification that enables implementation of intelligent solutions
- Professional analyses and implementation projects
- Complete documentation of realized systems



**OPTIDATA Sp. z o.o.**

**Office:** ul. Wielicka 50/5, 30-552 Kraków

**HQ:** ul. Wadowicka 8a wej. E, 30-415 Kraków

tel.: +48 12 299 60 00, fax.: +48 12 299 60 01

**ai@optidata.pl, www.optidata.pl**

# OPTIDATA